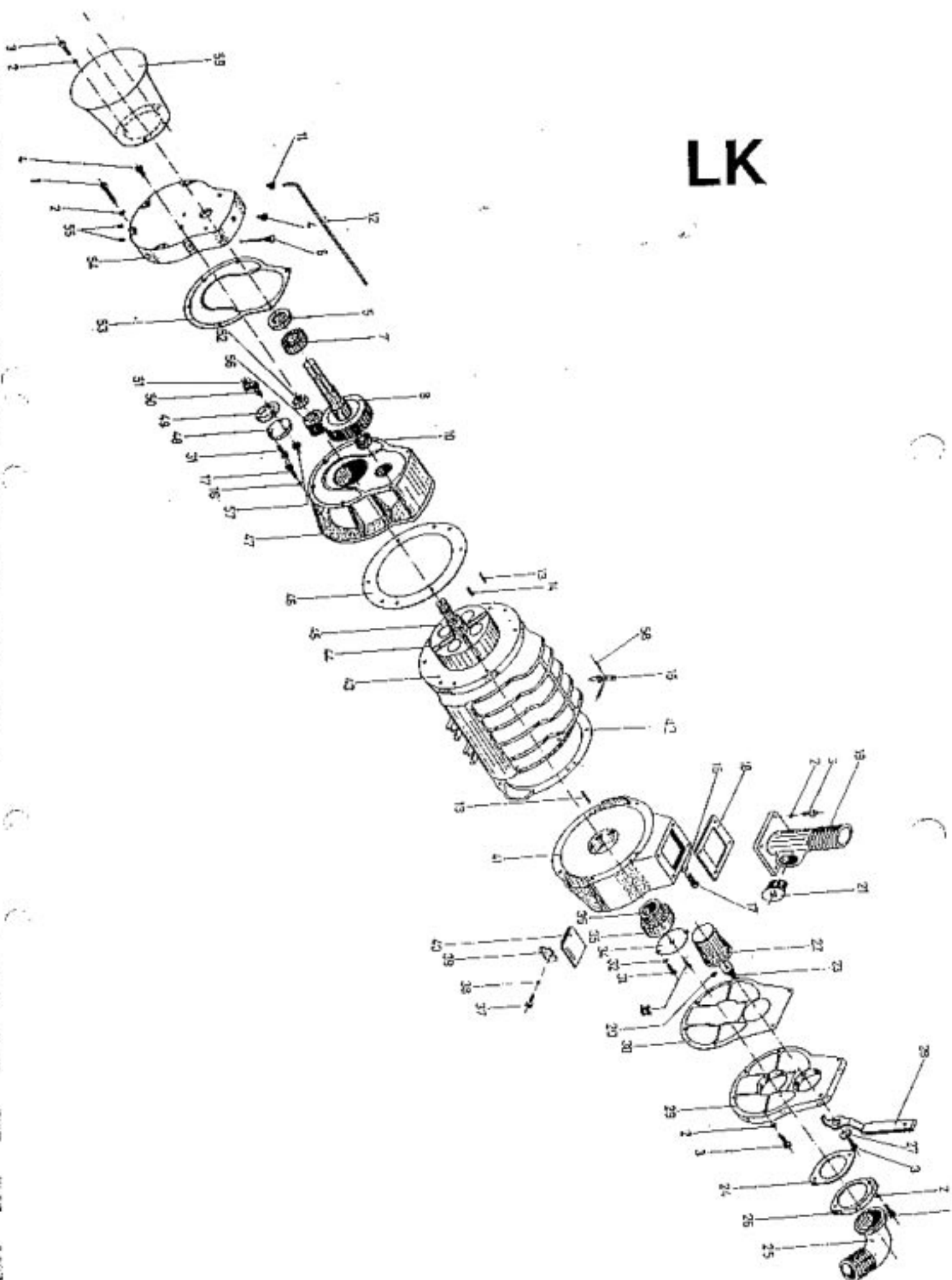


TANCO SLURRY PUMP
SPARE PARTS
LK & KD & BISKOR

LK



PTO ON TOP
HURSTEL PUMP

SPARE PARTS FOR LK VACUUM PUMPS

<u>NO:</u>	<u>CODE:</u>	<u>DESCRIPTION:</u>
1	M22LK01-6/10	SCREW M8 X 50, LK-6/10000
2	M22LK02	WASHER M8
3	M22LK03	SCREW M8 X 15
4	M22LK04	TAP 3/8 GAS
5	M22LK05	GREASE SEAL 35 X 55 X 10
6	M22LK06-6/10	OIL LEVEL INDICATOR LK-6/10000
7	M22LK07-6/10	BEARING 6307, LK-6/10000
8	M22LK08-6/10	ATTACK GEAR LK-6/10000 37-TOOTH
10	M22LK10	BEARING 6304
11	M22LK11	TUBE ADJUSTOR
12	M22LK12-80	COPPER TUBE COMP. FOR LK-8000
12	M22LK12-100	COPPER TUBE COMP. FOR LK-10000
13	M22LK13	ELASTIC PIN
14	M22LK14-6/10	KEY LK-6/10000
15	M22LK15	DRIP FEEDER COMP. WITH NIPPLES
16	M22LK16	WASHER M10
17	M22LK17	SCREW M10 X 25
18	M22LK18-6/10	RUBBER GASKET LK-6/10000
19	M22LK19-6/10	OUTLET ϕ 80MM, LK-6/10000
20	M22LK20	O-RING
21	M22LK21	TAP 1 $\frac{1}{8}$ "
22	M22LK22-6/10	CONIC DISTRIBUTOR LK-6/10000
23	M22LK23	SPRING
24	M22LK24	EXHAUST RUBBER GASKET
25	M22LK25-6/10	EXHAUST LK-6/10000
26	M22LK26	FLANGE
27	M22LK27	WASHER
28	M22LK28	HANDLE
29	M22LK29-6/10	DISTRIBUTOR COVER LK-6/10000
30	M22LK30-6/10	GASKET LK-6/10000
31	M22LK31	SCREW M6 X 15
32	M22LK32	WASHER M6;
34	M22LK34-6/10	BEARING COVER LK-6/10000
35	M22LK35-6/10	BEARING 6208 LK-6/10000
36	M22LK36-6/10	GREASE SEAL 60x45x12, LK-6/10000 22
37	M22LK37	SCREW M6 x 15
38	M22LK38	COPPER WASHER,
39	M22LK39	HINGE
40	M22LK40	PLUG (NON-RETURN VALVE)
41	M22LK41-6/10	DISTRIBUTOR LK-6/10000
42	M22LK42-6/10	GASKET LK-6/10000
43	M22LK43-8	PUMP BODY LK-8000
43	M22LK43-10	PUMP BODY LK-10000
44	M22LK44-8	VANE LK-8000 300 x 64 x 7.5
44	M22LK44-10	VANE LK-10000 360 x 64 x 7.5
45	M22LK45-8	ROTOR LK-8000
45	M22LK45-10	ROTOR LK-10000
46	M22LK46-6/10	GASKET LK-6/10000
47	M22LK47-6/10	GEAR BOX LK-6/10000

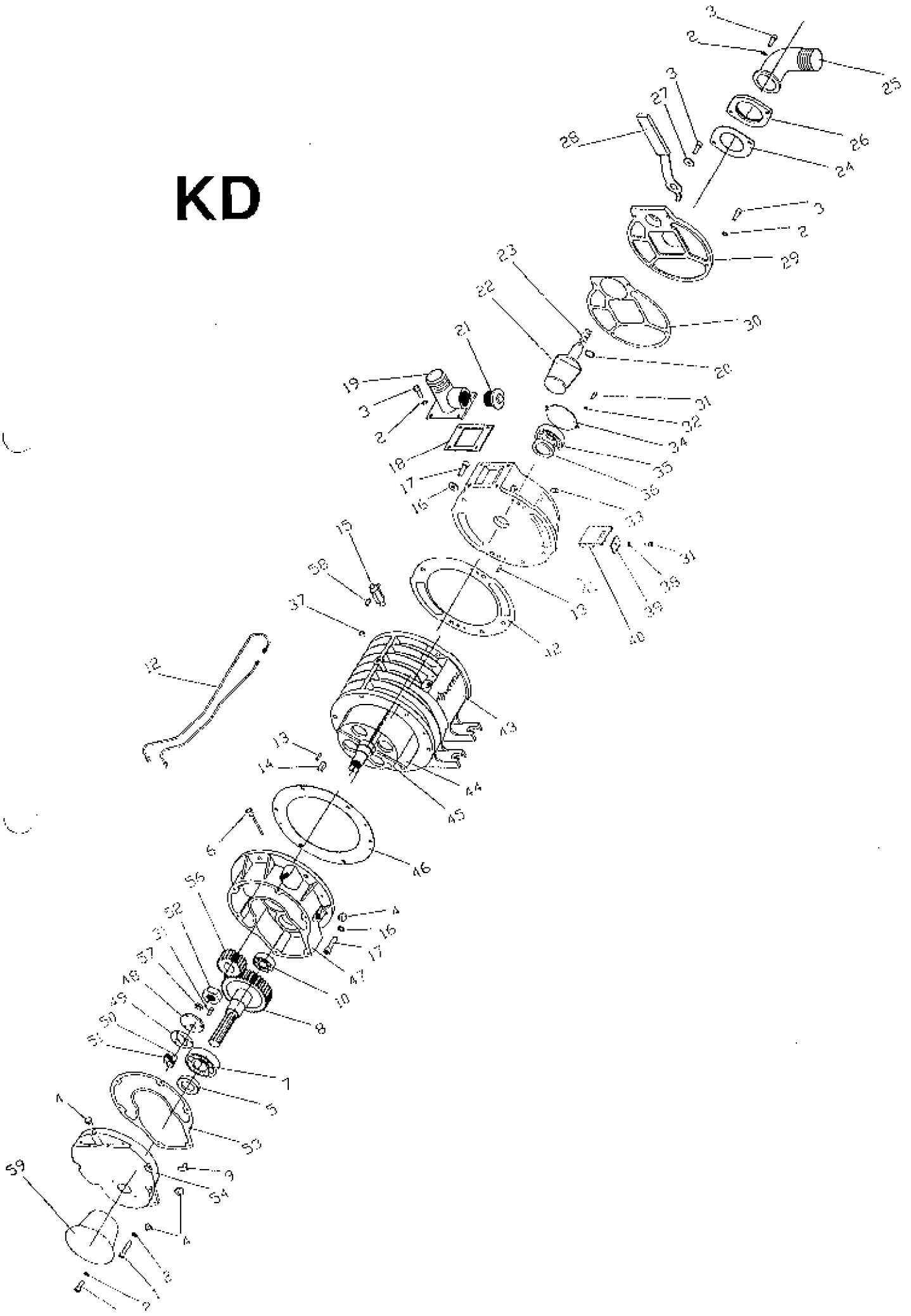
NO: CODE:

DESCRIPTION:

48	M22LK48	OIL PUMP COVER
49	M22LK49	OIL PUMP GASKET
50	M22LK50	OIL PUMP ATTACK GEAR
51	M22LK51	OIL PUMP SMALL GEAR
52	M22LK52	M24 X 2 ROTOR NUT
53	M22LK53-6/10	GASKET LK-6/10000
54	M22LK54-6/10	GEAR BOX COVER LK-6/10000
55	M22LK55	SET SCREW
56	M22LK56-6/10	SMALL GEAR LK-6/10000 <i>21 TOOTH</i>
57	M22LK57	GREASE SEAL 12 X 20 X 5
✓ 58	M22LK58	HOSE NIPPLE
59	M22LK59	PROTECTOR

↑ TO OUTPUT ON BOTTOM
MORTAR PUMP

KD



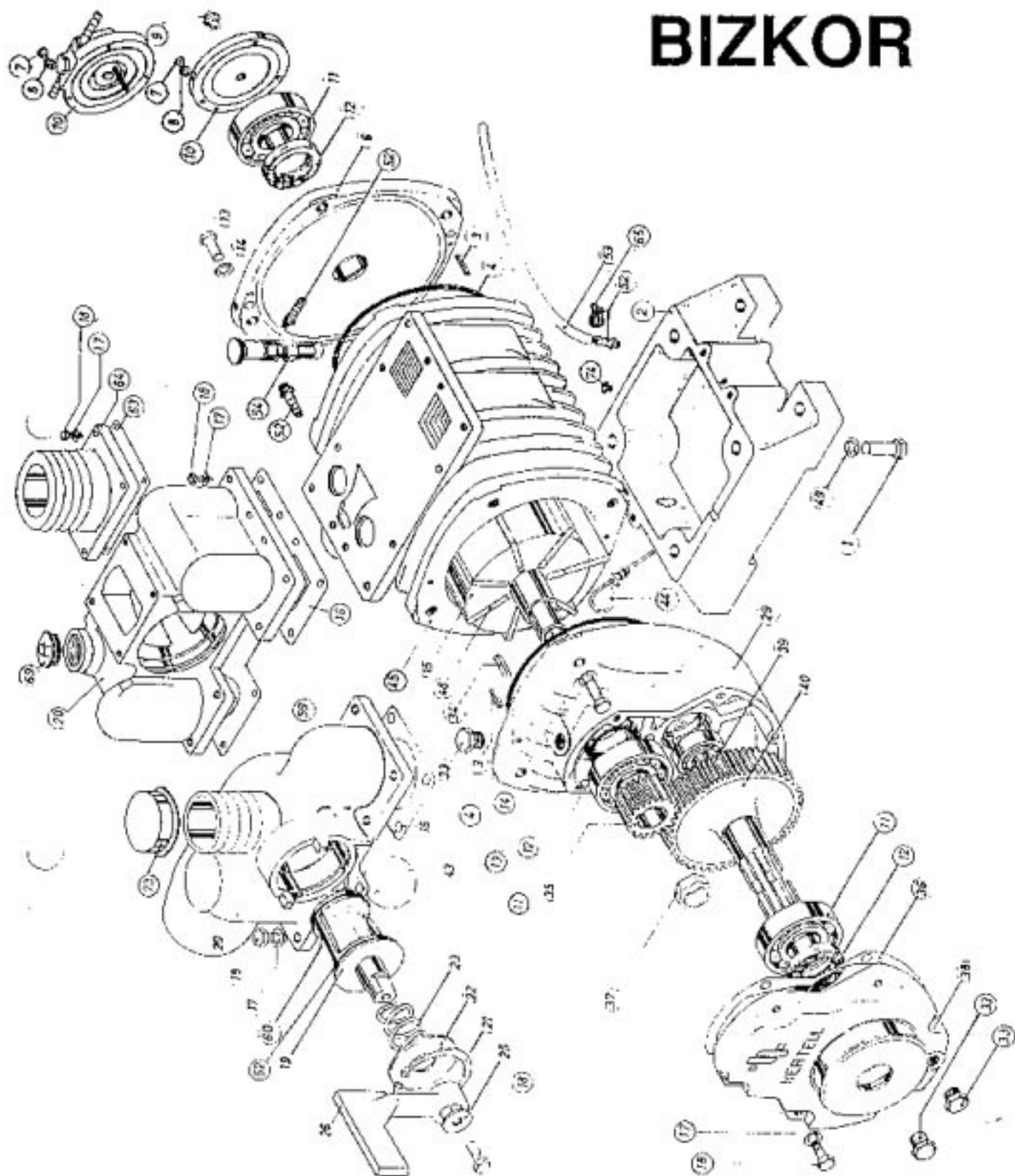
SPARE PARTS FOR KD VACUUM PUMPS

<u>NO:</u>	<u>COPE:</u>	<u>DESCRIPTION:</u>
1	M22LK01-6/10	SCREW M8 X 50
2	M22LK02	WASHER 8MM
3	M22LK03	SCREW M8 X 15
4	M22LK04	3/8 GAS BLANK
5	M22LK05	GREASE SEAL 35 X 55 X 10
6	M22KD06-6/12	OIL LEVEL INDICATORS
7	M22LK07-6/10	BEARING 6307
8	M22KD08-6/12S	LARGE GEAR <i>55 TEETH</i>
9	M22KD09	TEE PIECE NIPPLE
10	M22LK10	BEARING 6304
11	M22LK11	TUBE ADJUSTOR
12	M22KD12+100	COPPER TUBES FOR KD 10,000
12	M22KD12-10R	COPPER OILER TUBES FOR KD 8,000
12	M22KD12-80	COPPER TUBES FOR KD 8,000
12	M22KD12-80R	RUBBER OILER TUBES FOR KD 8,000
13	M22LK13	ELASTIC PIN
14	M22LK14-6/10	KEY
15	M22LK15	DRIP FEEDER C/W NIPPLES
16	M22LK16	WASHER 10MM
17	M22LK17	SCREW M10 X 25
18	M22LK18-6/10	RUBBER GASKET
19	M22LK19-6/10	OUTLET ϕ 80MM
20	M22LK20	'O' RING
21	M22LK21	1 1/2" BSP PLUG
22	M22KD22	CONIC DISTRIBUTOR
23	M22KD23	SPRING
24	M22LK24	EXHAUST RUBBER GASKET
25	M22LK25-6/10	EXHAUST
26	M22LK26	FLANGE
27	M22LK27	WASHER
28	M22LK28	HANDLE
29	M22KD29-6/12	DISTRIBUTOR COVER
30	M22KD30-6/12	GASKET
31	M22LK31	SCREW M6 X 15
32	M22LK32	WASHER 6MM
34	M22LK34-6/10	BEARING COVER
35	M22LK35-6/10	BEARING 6208
36	M22LK36-6/10	GREASE SEAL 60 X 45 X 12
37	M22LK37	SCREW M6 X 15
38	M22LK38	COPPER WASHER
39	M22LK39	HINGE
40	M22LK40	PLUG
41	M22KD41-6/12	DISTRIBUTOR HOUSING
42	M22KD42-6/12	GASKET
43	M22KD43-10	PUMP BODY KD 10,000
43	M22KD43-8	PUMP BODY KD R, 000
44	M22LK44-10	VANES 360 X 64 X 7.5
44	M22LK44-8	VANES 300 X 64 X 7.5

SPARE PARTS FOR XD VACUUM PUMPS

<u>NO.:</u>	<u>CODE:</u>	<u>DESCRIPTION:</u>
45	M22LK45-10	ROTOR
45	M22LK45-8	ROTOR
46	M22LK46-6/10	GASKET
47	M22KD47-6/12	GEAR BOX
48	M22LK48	OIL PUMP COVER
49	M22LK49	OIL PUMP GASKET
50	M22LK50	OIL PUMP ATTACK GEAR
51	M22LK51	OIL PUMP SMALL GEAR
52	M22LK52	M34 X 2 ROTOR NUT
53	M22LK53-6/10	GASKET
54	M22KD54-6/12	GEAR BOX
56	M22KD56-/12S	SMALL GEAR <i>28 TEETH</i>
57	M22LK57	GREASE SEAL 12 X 20 X 5
58	M22KD58	HOSE NIPPLE (RUBBER HOSE)
59	M22LK59	PROTECTOR

BIZKOR



SPARE PARTS FOR BIZKOR VACUUM PUMP

<u>NO:</u>	<u>CODE=</u>	<u>DESCRIPTION:</u>
1.	M22B 1	SCREW B-1/10000
2	M22B 2-5/8	OIL TANK B-5/8000
2	M22B 2-10	OIL TANK B-10000
3	M22B3	KEY B-1/10000
4	M22B4-3/8	GASKET B-3/8000
4	M22B4-10	GASKET B-10000
6	M22B6-3/8	END PLATE B-3/8000
6	M22B6-10	END PLATE B-10,000
7	M22B7	SCREW B-1/1000
8	M22B8	WASHER B-1/10000
9	M22B9	GREASE NIPPLE B-1/10000
10	M22B10-3/8	BEARING COVER B-3/8000 35 X 55 X 10
10	M22B10-10	BEARING COVER B-10000
11	M22B11-3/8	BEARING B-3/8000
11	M22B11-10	BEARING B-10000
12	M22B12-3/8	GREASE SEAL B-3/8000
12	M22B12-10	GREASE SEAL B-10000
13	M22B13	SCREW B-1/1000
14	M22B14	WASHER B-1/10000
15	M22B15-6	ROTOR B-6000 (NOT AVAILABLE)
15	M22B15-8	ROTOR B-8000 (NOT AVAILABLE)
15	M22B15-10	ROTOR B-10000 (NOT AVAILABLE)
16	M22B16-5/8	GASKET B-5/8000
16	M22B16-10	GASKET B-10000
17	M22B17	WASHER B-1/10000
18	M22B18	SCREW B-1/10000
19	M22B19-5/8	CONE, COMP. WITH GASKETS NO 60 + 62 FOR B-5/8000
19	M22B19-10	CONE, COMP. WITH GASKETS NO 60 + 62 FOR B-10000
20	M22B20-5/8	DISTRIBUTOR BODY B-5/8000
20	M22B20-10	DISTRIBUTOR BODY B-10000
21	M22B21-5/10	RING B-5/10000
22	M22B22-5/10	WASHER B-5/10000
23	M22B23	SPRING B-1/10000
25	M22B25	WASHER B-1/10000
26	M22B26	HANDLE B-1/10000
29	M22B29-3/8	GEARBOX BODY B-3/8000
29	M22B29-10	GEARBOX BODY B-10000
33	M22B33-3/10	SCREW B-3/10000
34	M22B34-1/8	KEY B-1/8000
34	M22B34-10	KEY B-10000
35	M22B35-3/8	SMALL GEAR B-3/8000
35	M22B35-10	SMALL GEAR B-10000
36	M22B36-3/8	GASKET B-3/8000
36	M22B36-10	GASKET B-10000
37	M22B37	SCREW R-1-10000
38	M22B38-3/8	GEARBOX COVER B-3/8000
38	M22B38-10	GEARBOX COVER R-10000
40	M22B40-3/10	ATTACK GEAR B-3/10000

<u>NO:</u>	<u>CODE:</u>	<u>DESCRIPTION:</u>
43	M22B43-3/8	RUBBER BALL B-3/8000
43	M22B43-10	RUBBER BALL B-10000
44	M22B44	OIL LEVEL INDICATOR B-1/10000
45	M22B45-6	PUMP BODY B-6000 (NOT AVAILABLE)
45	M22B45-8	PUMP BODY B-8000 (NOT AVAILABLE)
45	M22B45-10	PUMP BODY B-10000 (NOT AVAILABLE)
46	M22B46-5/6	VANE B-5/6000 360 X 45 X 6
46	M22B46-8/10	VANE B-8/10000 470 X 45 X 6
49	M22B49	WASHER B-1/10000
52	M22B52	HOSE NIPPLE B-1/10000
54	M22B54	DRIP FEEDER B-1/10000
60	M22B60-5/8	GASKET B-5/8000
60	M22B60-10	GASKET B-10000
62	M22B62-5/8	GASKET B-5/8000
62	M22B62-10	GASKET B-10000
63	M22B63	GASKET B-1/10000
64	M22B64-6/10	COUPLING B-6/10000
68	M22B68	PROTECTOR B-1/10000
69	M22B69	TAP B-5/10000
70	M22B70-3/8	LUBRICATION PUMP B-3/8000
70	M22B70-10	LUBRICATION PUMP B-10000
74	M22B74	SCREW B-1/10000